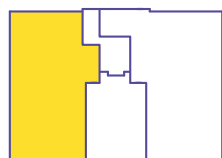
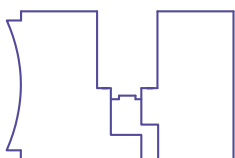
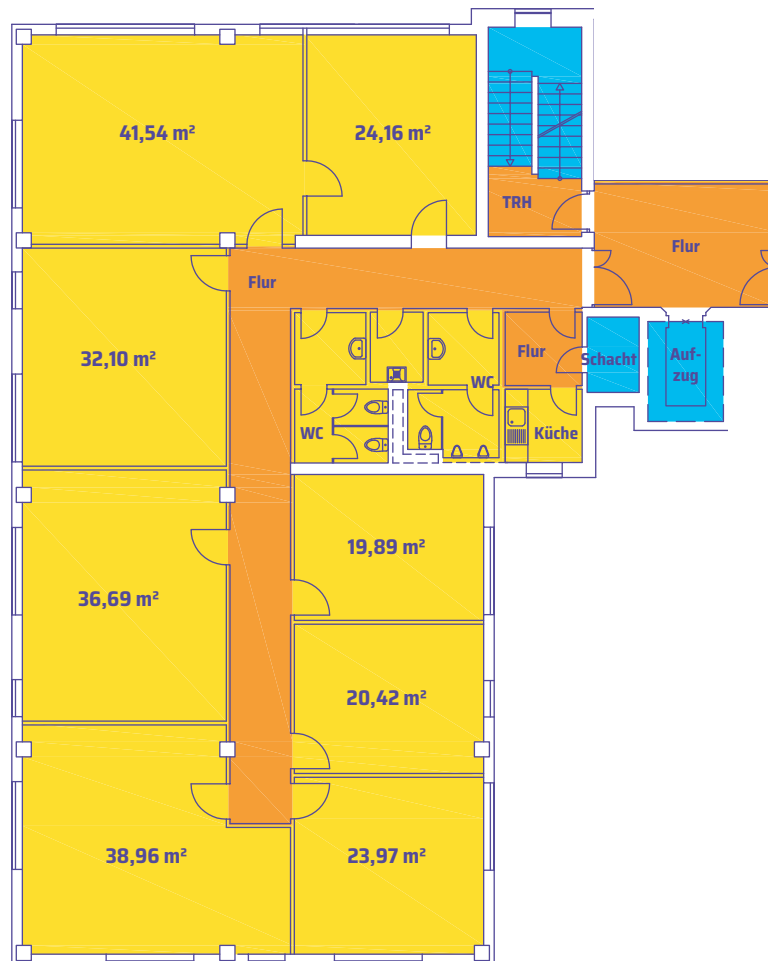


# MIETEINHEIT 20

BÜRO

4. OBERGESCHOSS

MIETFLÄCHE: 299 m<sup>2</sup>



4. OBERGESCHOSS



DW Real Estate

OBJEKTADRESSE

Siemensstraße 12 a und 12 b  
63263 Neu-Isenburg

[www.new-easy-offices.de](http://www.new-easy-offices.de)